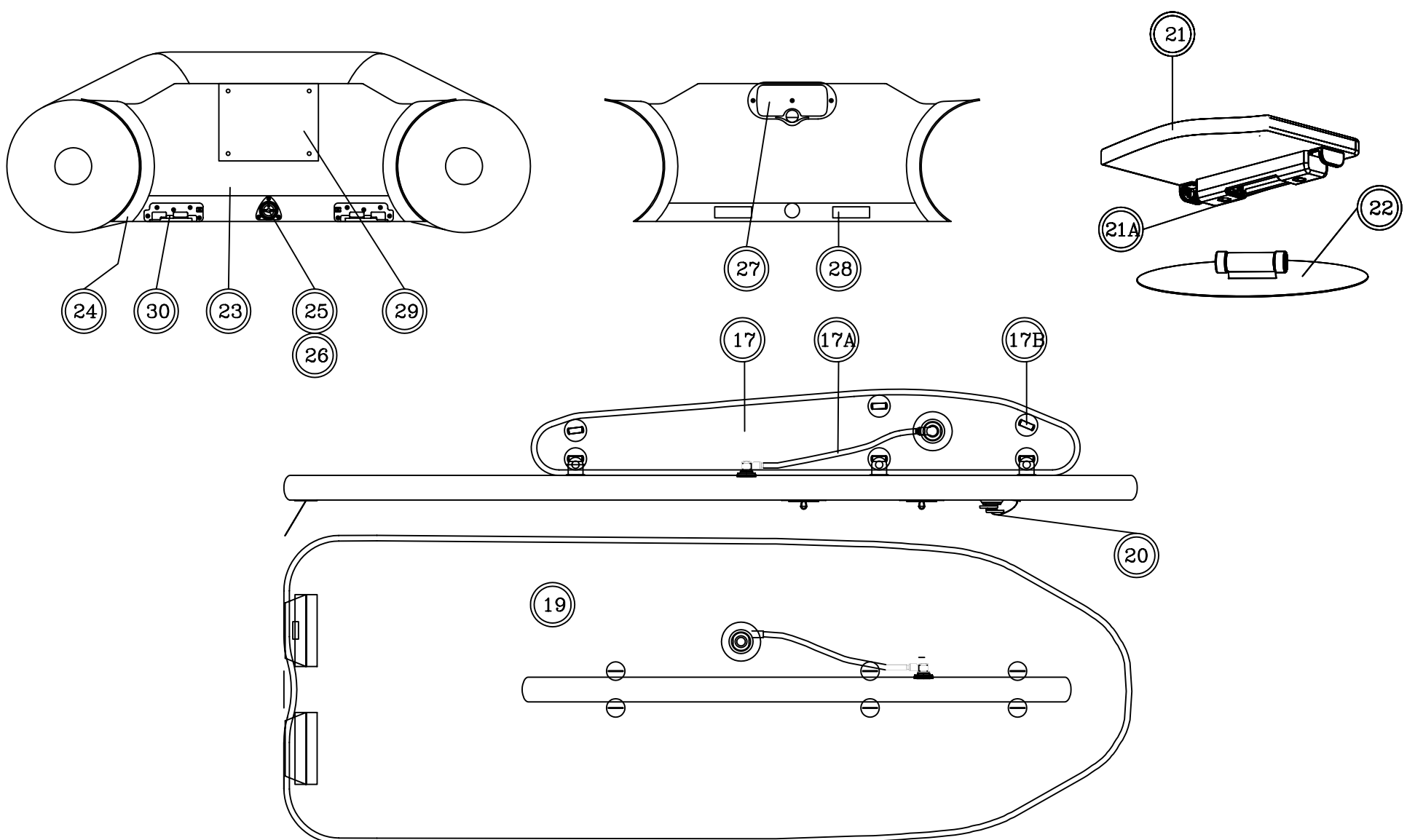
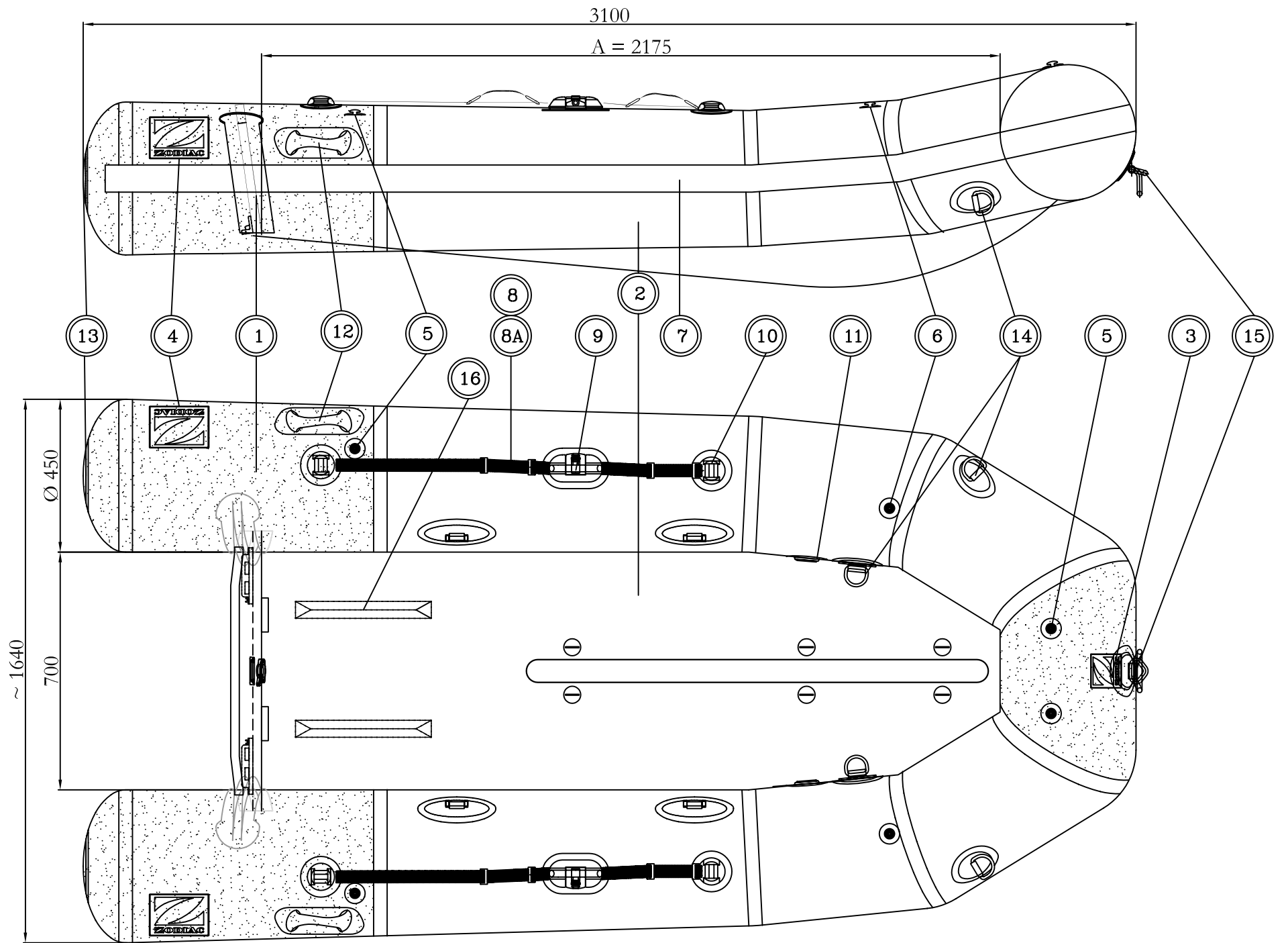


CFR 310 Acti-V - 05 - Z11413

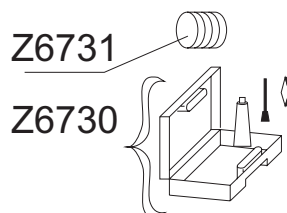
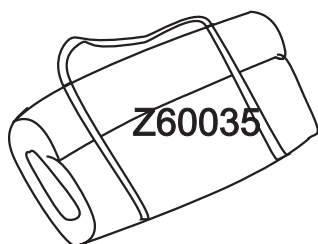
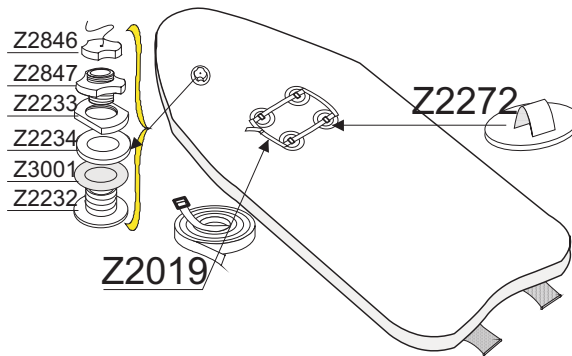
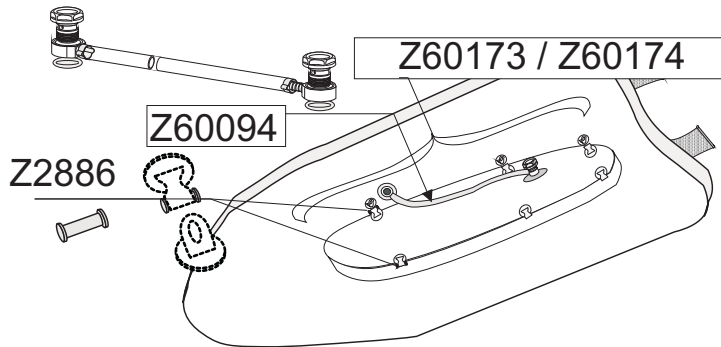
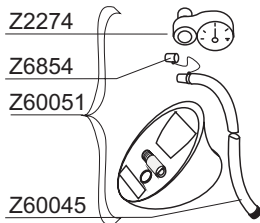
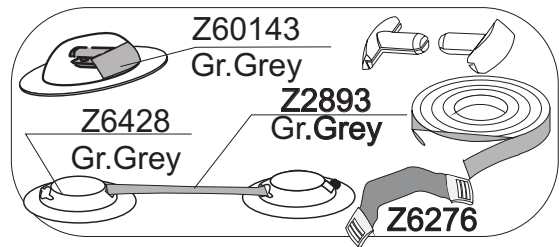
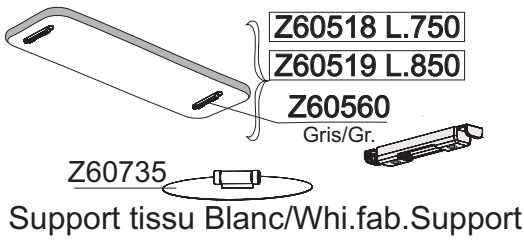
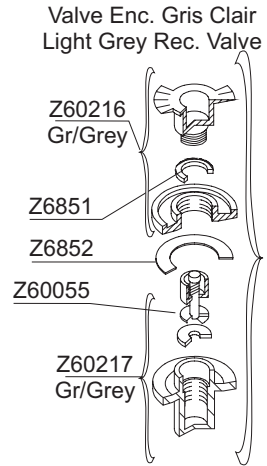
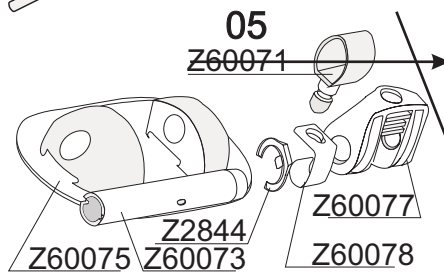
N° 3452155A SAV

DJA - 06.2005



PIECES CADET FR ACTI V 05  
 SPARE PARTS CADET FR ACTI V 05

GDB/9.05



|  |     | <b>Z11413 CADET FR 310 ACTI-V 2005</b> |                                | 10 08 2005                        |
|--|-----|--|--------------------------------|-----------------------------------|
| Rep.   | Qty | PTN°                                   | Description FR                 | Description GB                    |
| <b>EQUIPMENT FLOTTEUR -- BUOYANCY TUBE EQUIPMENT</b>                   |     |  |                                |                                   |
| 1  | M   | Z7051                                  | T/GRIS ZODIAC REPAR.(1ML)      | MEDIUM GREY REPAIR FABRIC         |
| 2  | M   | Z7041                                  | T/REPAR.950 GRIS CLAIR         | LIGHT GREY REPAIR FABRIC          |
| 3  | 1   | Z60018                                 | LOGO "Z" 02 PM BLEU JAUNE (1)  | LOGO "Z" 02 SMALL BLUE YEL(1)     |
| 4  | 2   | Z60019                                 | LOGO "Z" 02 GM BLEU JAUNE (1)  | LOGO "Z" 02 LARGE BLUE YELL(1)    |
| 5  | 4   | Z60725                                 | PLOT FIX.SAC/AVIR.GR.MOYEN (4) | PLAST.ATTACH.OAR MEDIUM GR,       |
| 6  | 2   | Z2816                                  | PLOT FIX.SAC/AVIR.GRIS (4)     | PLAST.ATTACH.OAR/BAG GR4          |
| 7  | 1   | Z60628                                 | DEF GR.M/JAUNE/BLEU 8M10       | RUB STRAKE MED.GR/YEL/BLU/8M10    |
| 8  | 4   | Z6276                                  | PG SURMOULEE GRISE SNG 35 (2)  | HANDLE F/SAFETY STRAP GREY (2)    |
| 8A   | M   | Z2893                                  | SANGLE GRISE L35MM (10M)       | GREY STRAP 35MM (10M)             |
| 9  | 2   | Z60738                                 | TOLET BLOQUEUR AVIRON GRIS (2) | OAR LOCK JUBILEE CLIP GREY (2)    |
| 9  | 2   | Z60073                                 | AXE DN BASC. 01 GR-CL (1)      | AXE RECL.OAR 01 GREY (1)          |
| 9  | 2   | Z2844                                  | AN.AXE DAME BASCUL.GR(10)      | RING F/RECL.OAR GR 10             |
| 9  | 2   | Z60075                                 | EMBASE 01 DN BASC. GR-CL (1)   | SUPPORT RECLINING OAR 01 GREY     |
| 9  | 2   | Z60077                                 | COQUILLE. 02 GR-CL DNB. (1)    | SWIVEL RECLINING OAR 02 GREY      |
| 9  | 2   | Z60078                                 | BOUTON RESSORT DAME NAGE(2)    | RETAINER FOR OAR SWIVEL 02 (2)    |
| 10   | 4   | Z6428                                  | PAS.SANGL/DRISS.GR/CL.(1)      | MOULD.STRAP/ROPE HOLD 1GR         |
| 10   | 4   | Z60143                                 | VERROU SANGLE "T" GR. (4)      | RETAINER FOR STRAP "T" GR (4)     |
| 11   | 2   | Z60216                                 | BOUCHON VIS VALVE ENC GR CL(5) | CAP THREAD RECES.VALVE(5)GREY     |
| 11   | 2   | Z6851                                  | JT BOUCHON V.E. (25)           | GASKET/CAP RECESSED VALVE (25)    |
| 11   | 2   | Z6852                                  | JT ECROU V.E.(10)              | GASKET/SCREW RECES.VALVE (10)     |
| 11   | 2   | Z60055                                 | SUPPORT CLAP. VALVE ENC.02(10) | RECESSED VALVE INSERT 2002(10)    |
| 11   | 2   | Z60217                                 | CORPS VALVE ENCASTREE GR CL(5) | BODY/SCREW.RECES.VALVE GR(5)      |
| 12   | 1   | Z3077                                  | PG LAT GAUCHE GRIS/CL 95       | GREY CARR HD LEFT 95              |
| 12   | 1   | Z3078                                  | PG LAT DROITE GRIS/CL 95       | GREY CARR HD RIGHT 95             |
| 13   | 2   | Z60608                                 | CONE 05 CALOTTE GR.CL D201     | CONE END 05-D201 GREY FABRIC      |
| 14   | 2   | Z2303                                  | AD 53 ROND GRIS CLAIR (2)      | D RING 53 ROUND L.GREY(2)         |
| 15   | 1   | Z60093                                 | PG AV RONDE GRI-CL 03          | GB BOW HANDLE LIGHT GREY ROUND 03 |
| 16   | 2   | Z2758                                  | PROFIL ANTI DERIVE GRIS 2      | ANTI SKIDDING FINNS 52°           |
| <b>PLANCHER - QUILLE &amp; VALVE --- WOODEN FLOOR- INFLATABLE KEEL</b> |     |  |                                |                                   |
| 17   | 1   | Z60174                                 | QUILLE H2P C285/310/340 A-V    | KEEL H2P C285/310/340 A-V         |
| 17A  | 1   | Z60094                                 | TUYAU LIAISON QUILLE HPP KIT   | HPP KEEL CONNECTION HOSE SET      |
| 17B  | 1   | Z2886                                  | VERROU SANGLE GRIS (10)        | PLAS.STRAP RETAIN/GREY 10         |
| 19   | 1   | Z60723                                 | PLANCHER H2P 67MM ACTIV 310/05 | AIR FLOOR H2P ACTIV 310/05        |
| 20   | 1   | Z2846                                  | BOUCHON CLAPET DELRIN(10)      | CAP BLACK VALVE (P10)             |
| 20   | 1   | Z2847                                  | CORPS CLAPET DELRIN(10)        | DELRIN BLACK VALVE (P10)          |
| 20   | 1   | Z2233                                  | ECROU EMBASE (10)              | NUT VALVE INSERT BASE (P10)       |
| 20   | 1   | Z2234                                  | RONDELLE EMBASE (10)           | GASKET VALVE INSERT BASE (P10)    |
| 20   | 1   | Z3001                                  | JT NEO.EMBASE CLAPET(25)       | GASKET INSERT BASE NEOPRE (25)    |
| 20   | 1   | Z2232                                  | EMBASE CLAPET (10)             | VALVE INSERT BASE (P10)           |
| <b>BANC -- WOODEN BENCH</b>  |     |  |                                |                                   |
| 21   | 1   | Z60518                                 | BANC QUICK FIT 750 GR.CL 05    | QUICK FIT BENCH L750 L GREY       |
| 21A  | 2   | Z60560                                 | SUPPORT MULTIF.GRIS BANC 05(2) | QUICK FIT BENCH RETAINER GR 05    |
| 22   | 4   | Z60734                                 | SUPP BANC RENFORCE T/GR.CL (2) | SUPP/GR.FAB.V2 QCK FIT BENCH      |
| <b>TABLEAU -- TRANSOM</b>  |     |  |                                |                                   |
| 23   | 1   | Z3224                                  | TABLEAU T3 GRIS ZODIAC         | TRANSOM S3 MEDIUM GREY            |
| 24   | 2   | Z3327                                  | GLISSIERE TABLEAU GRISE (1)    | TRANSOM BRACKET (1) GREY          |
| 25   | 1   | Z61083                                 | VIDE-VITE A LEVIER GRIS (1)    | SELF BAILER/LEVER TYPE GREY 1     |
| 26   | 1   | Z60501                                 | MEMBRANE VIDE VITE LEVIER (5)  | DIAPHRAGM /02 SELF BAILER (5)     |
| 27   | 1   | Z6088                                  | PLAQUE MOTEUR GM 99            | MOTOR MOUNTING PLATE S2           |
| 28   | 2   | Z3143                                  | TASSEAU MULTIF GR-CL (10)      | PLAST.FLOOR RETAINER GR10         |
| 29   | 1   | Z2042                                  | PLAQUE MARTYRE VERNIE 12MM     | WOODEN TRANSOM PAD12MM WARNISH    |
| 30   | 1   | Z60710                                 | PRE-EQUIPEMENT FLAP GRIS CL.05 | PRE-EQUIPMENT FLAP GREY 05 SET    |
| <b>EQUIPMENT STANDARD STANDART EQUIPMENT</b>                           |     |  |                                |                                   |
|  | 2   | Z6425                                  | AVIRON GRIS 1.60XD35 (2)       | GREY OAR 1.60XD35 (2)             |
|  | 2   | Z2815                                  | CLIP AVIRON GRIS CLAIR(2)      | OAR CLIP -GREY PLASTIC- (2)       |
|  | 1   | Z60051                                 | GONFLEUR BRAVO 5 HP + MANO     | H2P FOOT PUMP+AIR PRESS.GAUGE     |
|  | 1   | Z60045                                 | TUYAU GONFLEUR H2P ANNEXE      | HOSE F/TENDER H2P FOOT PUMP       |
|  | 1   | Z6854                                  | RACCORD VALVE ENCAST TUY/GONFL | COUPLING RECESSED VALVE           |
|  | 1   | Z2274                                  | MANOMETRE GONFLEUR 2197        | MANOMETRE GONFLEUR 2197           |
|  | 1   | Z60035                                 | SAC ZODIAC ANNEXE GM 2002      | CARRY BAG ZODIAC TENDER LARGE     |
|  | 1   | Z6730                                  | V/REP.BATEAUX STRONGAN         | STRONGAN BOATS REPAIR KIT         |
|  | 1   | Z6731                                  | PALETTE PIECES TISSU /REPAR.ST | FAB.PATCHES STG FOR REPAIR        |
|  | 1   | Z60186                                 | AUTO-COLLANT SECURITE          | STICKER -SAFETY-                  |
|  | 1   | Z3018                                  | MAN.PROP T1 GENERALITES        | MAN.PROP T1 GENERALITES           |
|  | 1   | Z60360                                 | MAN PROP. T2 CADET FR.ACTI-V   | OWNERS MAN V.2 CADET FR ACTI-V    |
|  | 1   | Z2019                                  | SANGLE RESERVOIR               | TIE DOWN STRAP F/AIRFLOOR         |